

Romania Aegis Ashore Industry Day

Bucharest, Romania



Hilton Hotel
June 13, 2012



Industry Day Agenda – Bucharest

June 13, 2012

• Registration	0700-0800
• Welcome / Introductory Remarks	0800-0815
• Aegis Ashore Overview (MDA)	0815-0830
• Site Overview and Facilities (CENAU)	0830-1000
• Doing Business with the US Army Corps of Engineers (CENAU)	1000-1130
• Base Operating Support for Aegis Ashore Romania (NAVFAC EURAFSWA)	1130-1145
• Q&A session	1145-1245
• Wrap-up and Closing Remarks	1245-1300

Romania Aegis Ashore Industry Day

Caracal, Romania



Casa Armatei
June 14, 2012



Industry Day Agenda – Caracal

June 14, 2012

• Registration	1200-1300
• Welcome / Introductory Remarks	1300-1315
• Aegis Ashore Overview (MDA)	1315-1330
• Site Overview and Facilities (CENAU)	1330-1500
• Doing Business with the US Army Corps of Engineers (CENAU)	1500-1630
• Base Operating Support for Aegis Ashore Romania (NAVFAC EURAFSWA)	1630-1645
• Q&A session	1645-1745
• Wrap-up and Closing Remarks	1745-1800



Aegis Ashore – Romania



**Industry Days
13-14 June 2012**



Regional Defense

– European Phased Adaptive Approach –

- **Lisbon Summit**
 - **Support for EPAA and NATO territorial defense**
- **Phase I**
 - **Complete 2011**
- **Phase II**
 - **Romania 2015**
- **Phase III**
 - **Poland 2018**



C2BMC
Ramstein



CAOC
Uedem

C2BMC and ALTBMD

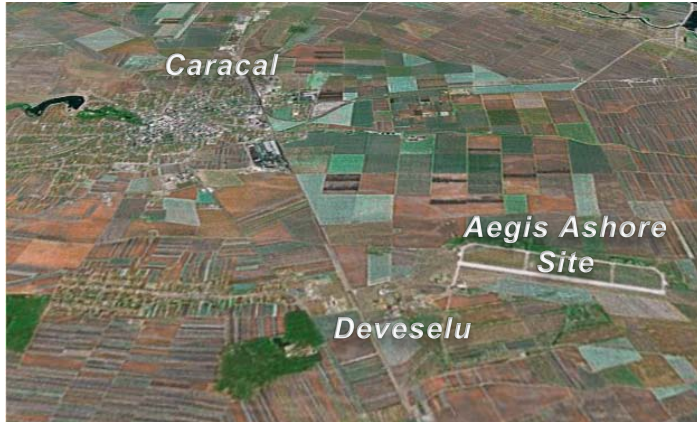
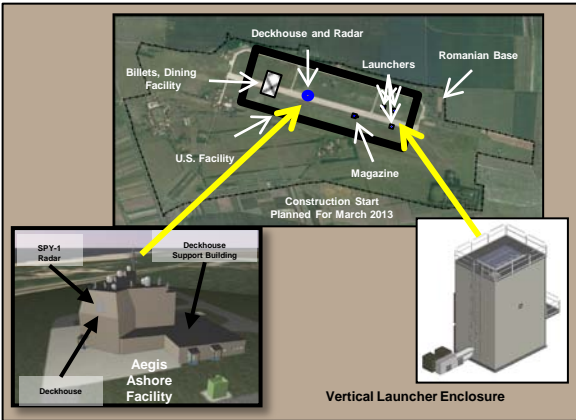


U.S.–Romania Ballistic Missile Defense Agreement
September 2011



Aegis Ashore Site – Deveselu Base, Romania

– Path To Construction –



Task	2012	2013	2014	2015
Site Design	<div></div>			
Site Construction		<div></div>	<div></div>	Phase II Capability ★

ROMANIAN INDUSTRY DAY

US Army Corps of Engineers

Europe District



US Army Corps of Engineers
BUILDING STRONG®

Europe District

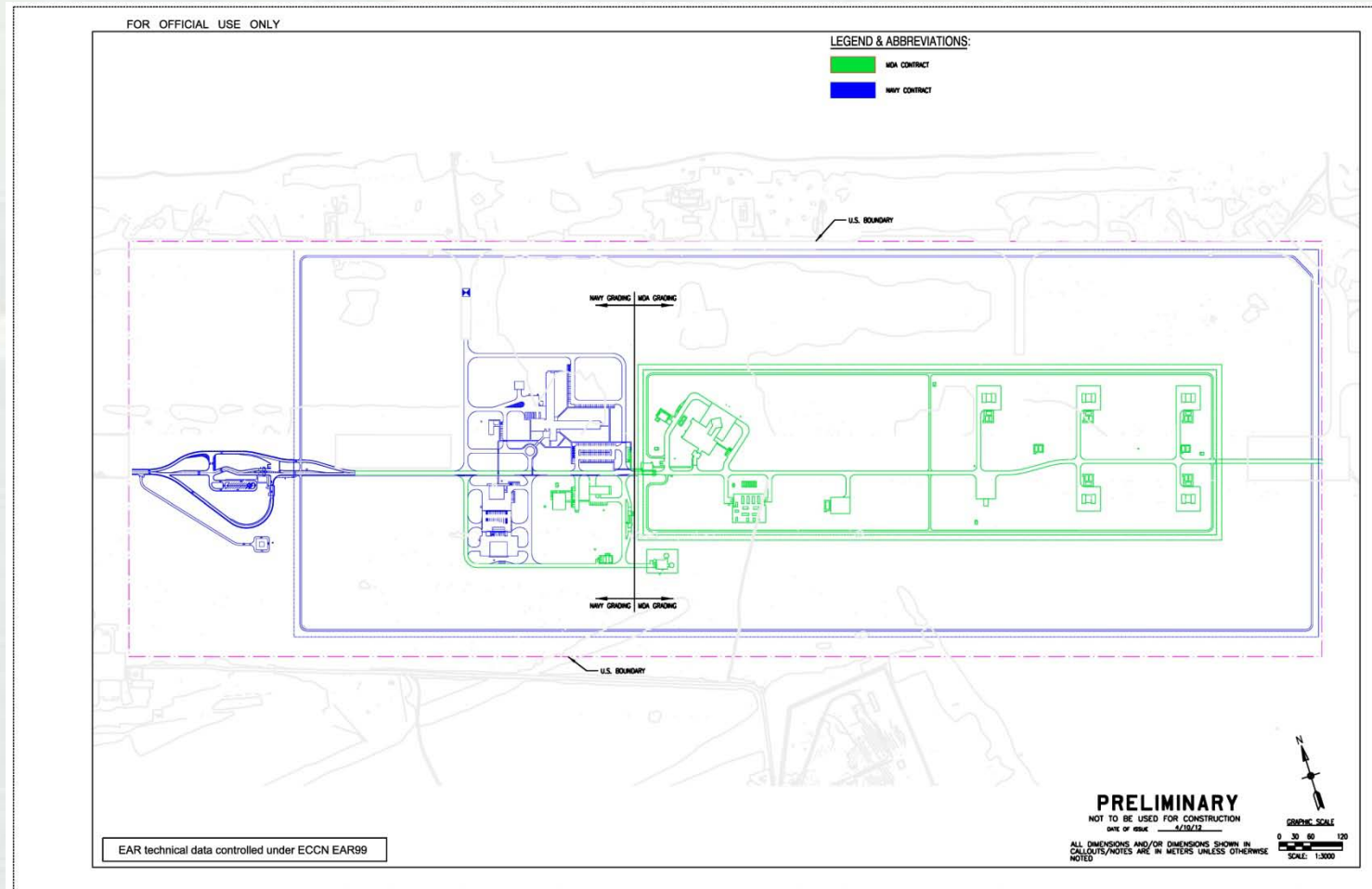
MDA Mission Support Branch

- Construction Schedule
- Contracting Strategy
- Construction Security Strategy
- Facilities and Team Introduction



BUILDING STRONG®

Site Layout with Responsibility



Legend:

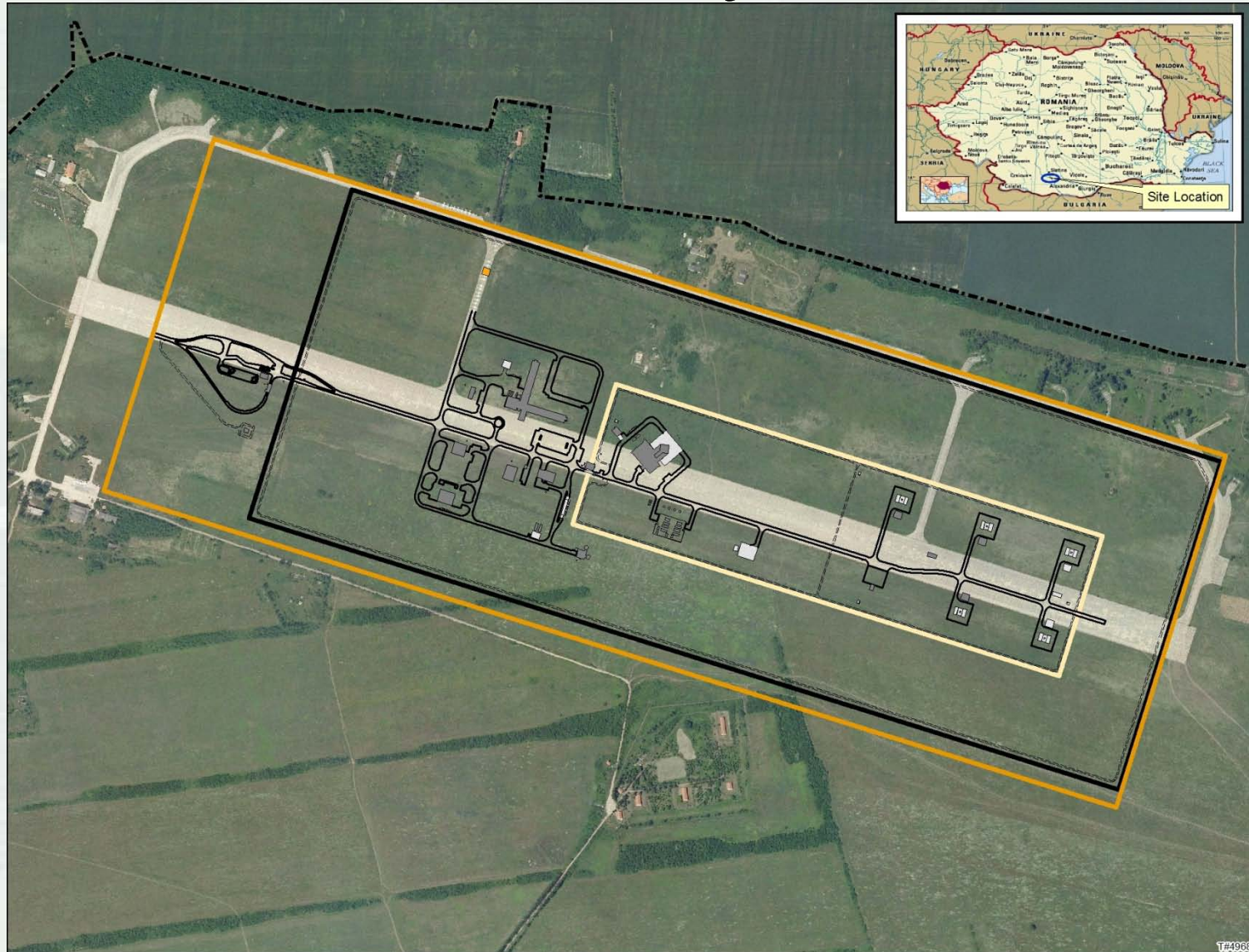
MDA Facilities

Navy Facilities



BUILDING STRONG®

Site Layout



BUILDING STRONG®

MDA Facilities

- **Launch Area Infrastructure**
- **Deckhouse Support Building**
- **Mission Backup Power Plant**
- **Storage Facility**
- **Access Control Facility**
- **Security Control Building**
- **Warehouse**
- **Non-Mission Power Plant**
- **Foundation Construction**
- **Fire Station**
- **Site Infrastructure / Utilities**

GREEN

- **US PRIME CONTRACTOR REQUIRED**
 - Teaming opportunities for construction and as vendors, suppliers or subcontractors

BLACK

- **US PRIME CONTRACTOR NOT REQUIRED**



BUILDING STRONG®

MDA Facilities

Size: ~ 12,000 sm

Design Narrative: Concrete and asphalt paving, utility excavation, and both horizontal and vertical construction.

- **Mission Infrastructure**
- Deckhouse Support Building
- Mission Backup Power Plant
- Storage Facility
- Access Control Facility
- Security Control Building
- Warehouse
- Non-Mission Power Plant
- Foundation Construction
- Fire Station
- Site Infrastructure / Utilities



BUILDING STRONG®

MDA Facilities

Size: ~ 2703 sm

Design Narrative: Concrete and steel construction with specialty exterior skin. Interior is standard commercial office type construction techniques.

- Mission Infrastructure
- **Deckhouse Support Building**
- Mission Backup Power Plant
- Storage Facility
- Access Control Facility
- Security Control Building
- Warehouse
- Non-Mission Power Plant
- Foundation Construction
- Fire Station
- Site Infrastructure / Utilities



BUILDING STRONG®

MDA Facilities

- Mission Infrastructure
- Deckhouse Support Building
- **Mission Backup Power Plant**
- Storage Facility
- Access Control Facility
- Security Control Building
- Warehouse
- Non-Mission Power Plant
- Foundation Construction
- Fire Station
- Site Infrastructure / Utilities

Size: NA (multiple pieces)

Design Narrative: 4 DGs, 2 MGs, and associated switchgear in a re-constitutable configuration.



BUILDING STRONG®

MDA Facilities

- Mission Infrastructure
- Deckhouse Support Building
- Mission Backup Power Plant
- **Storage Facility**
- Access Control Facility
- Security Control Building
- Warehouse
- Non-Mission Power Plant
- Foundation Construction
- Fire Station
- Site Infrastructure / Utilities

Size: ~ 111 sm

Design Narrative: Structural concrete construction with a concrete roof.



BUILDING STRONG®

MDA Facilities

- Mission Infrastructure
- Deckhouse Support Building
- Mission Backup Power Plant
- Storage Facility
- **Access Control Facility**
- Security Control Building
- Warehouse
- Non-Mission Power Plant
- Foundation Construction
- Fire Station
- Site Infrastructure / Utilities

Size: ~ 230 sm

Design Narrative: Standard design features with sally port, fencing, vehicle controls, barriers, etc.



BUILDING STRONG®

MDA Facilities

- Mission Infrastructure
- Deckhouse Support Building
- Mission Backup Power Plant
- Storage Facility
- Access Control Facility
- **Security Control Building**
- Warehouse
- Non-Mission Power Plant
- Foundation Construction
- Fire Station
- Site Infrastructure / Utilities

Size: ~ 734 sm

Design Narrative: Concrete walls with insulated metal skin with standing seam metal roof housing offices and conference room.



BUILDING STRONG®

MDA Facilities

- Mission Infrastructure
- Deckhouse Support Building
- Mission Backup Power Plant
- Storage Facility
- Access Control Facility
- Security Control Building
- **Warehouse**
- Non-Mission Power Plant
- Foundation Construction
- Fire Station
- Site Infrastructure / Utilities

Size: ~ 242 sm

Design Narrative: Concrete walls with metal skin, structural steel roof framing with a metal standing seam roof.



BUILDING STRONG®

MDA Facilities

- Mission Infrastructure
- Deckhouse Support Building
- Mission Backup Power Plant
- Storage Facility
- Access Control Facility
- Security Control Building
- Warehouse
- **Non-Mission Power Plant**
- Foundation Construction
- Fire Station
- Site Infrastructure / Utilities

Size: NA (multiple pieces)

Design Narrative: 1 DG and associated switchgear.



BUILDING STRONG®

MDA Facilities

- Mission Infrastructure
- Deckhouse Support Building
- Mission Backup Power Plant
- Storage Facility
- Access Control Facility
- Security Control Building
- Warehouse
- Non-Mission Power Plant
- **Foundation Construction**
- Fire Station
- Site Infrastructure / Utilities

Size: As required

Design Narrative: Varies from deep piles to standard spread footing.



BUILDING STRONG®

MDA Facilities

- Mission Infrastructure
- Deckhouse Support Building
- Mission Backup Power Plant
- Storage Facility
- Access Control Facility
- Security Control Building
- Warehouse
- Non-Mission Power Plant
- Foundation Construction
- **Fire Station**
- Site Infrastructure / Utilities

Size: ~ 585 sm

Design Narrative: Concrete walls with insulated metal skin with standing seam metal roof.



BUILDING STRONG®

MDA Facilities

- Mission Infrastructure
- Deckhouse Support Building
- Mission Backup Power Plant
- Storage Facility
- Access Control Facility
- Security Control Building
- Warehouse
- Non-Mission Power Plant
- Foundation Construction
- Fire Station
- **Site Infrastructure / Utilities**

Size: ~ 357 acres

Design Narrative: One contract within MDA effort



BUILDING STRONG®

Navy Facilities

US Prime Contractor Not Required

- Access Control Facility
- Housing & Dining Facility
- Warehouse
- Medical Facility
- Public Works Facility
- Site Utilities / Infrastructure



BUILDING STRONG®

Navy Facilities

Size: ~ 190 sm

Design Narrative: 1-story concrete structure, with covered 2-lane entrance with Guard Booths. Includes standalone Vehicle Inspection canopy, sized for a 60' truck.

- **Access Control Facility**
- **Housing & Dining Facility**
- **Warehouse**
- **Medical Facility**
- **Public Works Facility**
- **Site Utilities / Infrastructure**



BUILDING STRONG®

Navy Facilities

- Access Control Facility
- **Housing & Dining Facility**
- Warehouse
- Medical Facility
- Public Works Facility
- Site Utilities / Infrastructure

Size: ~ 3700 sm

Design Narrative: Building is an L-shaped, two-wing concrete facility. Each Barracks wing is two stories. Dining Facility / common area is one-story link between two wings.



BUILDING STRONG®

Navy Facilities

- Access Control Facility
- Housing & Dining Facility
- **Warehouse**
- Medical Facility
- Public Works Facility
- Site Utilities / Infrastructure

Size: ~ 850 sm

Design Narrative: Building is a one-story concrete-framed structure. Warehouse includes 'drive-through' truck access. Exterior canopy provides covered Connex/container storage.



BUILDING STRONG®

Navy Facilities

- Access Control Facility
- Barracks / Dining Facility
- Warehouse
- **Medical Facility**
- Public Works Facility
- Site Utilities / Infrastructure

Size: ~ 250 sm

Design Narrative: Simple one-story concrete building with center corridor.



BUILDING STRONG®

Navy Facilities

- Access Control Facility
- Barracks / Dining Facility
- Warehouse
- Medical Facility
- **Public Works Facility**
- Site Utilities / Infrastructure

Size: ~ 725 sm

Design Narrative: One-story concrete building. Approximately one-half is warehouse-style bays and one-half is office/support spaces.



BUILDING STRONG®

Navy Facilities

- Access Control Facility
- Housing & Dining Facility
- Warehouse
- Medical Facility
- Public Works Facility
- **Site Utilities / Infrastructure**

Provides water, wastewater, power, and communications serving a population of 250 personnel.

Intent is to link to offsite community infrastructure for power and wastewater.



BUILDING STRONG®

Doing Business with USACE

Step 1: Mandatory Registration: The Federal Government mandates that a contractor be registered in the Central Contractor Registrar (CCR) prior to the award of a Federal contract. Federal Acquisition Regulation (FAR) clause 52.204-7 states that in order to do business with the Government, the contractor must be registered in the CCR database. Firms interested in doing business with the Federal Government should visit the CCR website to register:

<http://www.ccr.gov>

The website contains a tutorial for registration assistance.



BUILDING STRONG®

DUNS Number

Step 2: Obtain a Data Universal Numbering System (DUNS) Number

- If you do not have a DUNS Number, contact Dun and Bradstreet to obtain one.

dnb.com



BUILDING STRONG®

CAGE/NCAGE Code

Step 3: Vendors must obtain a Contractor and Government Entity Code (CAGE) or NATO Contractor and Government Entity (NCAGE) Code.

- The CAGE Code (for U.S. vendors) and NCAGE Code (for foreign vendors) is a required piece of data for registering in the CCR system. If you are a vendor located in the U.S. and do not have a CAGE Code, a CAGE Code will be assigned to you when you register in the CCR system for the first time. A foreign vendor must contact its country representative to receive its NCAGE Code assignment.



CAGE/NCAGE Websites

The CAGE Welcome information page is at:
http://www.dlis.dla.mil/cage_welcome.asp

A list of country representatives can be found at:
http://www.dlis.dla.mil/nato_poc.asp

The NCAGE Code request form is at:
http://www.dlis.dla.mil/Forms/Form_AC135.asp

<https://orca.bpn.gov/>



BUILDING STRONG®

Federal Business Opportunities

Announcements of Opportunities: Firms seeking opportunities with the U.S. Army Corps of Engineers (USACE) must utilize the FedBizOpps:

<http://www.fbo.gov>

The FedBizOpps is a public website used by the federal agencies to advertise solicitations valued at \$25,000 and over.



BUILDING STRONG®

Construction Contracting Opportunities

Firms interested in construction opportunities are encouraged to review Engineer Pamphlet 415-1-5, How to Obtain Construction Contracts with the US Army Corps of Engineers, located at

http://140.194.76.129/publications/eng-pamphlets/EP_415-1-5/EP_415-1-5.pdf.



BUILDING STRONG®

Construction Quality Management Course

USACE Districts conduct the Construction Quality Management (CQM) Course, which is required to be completed prior to receiving a construction contract award. The course, developed in partnership with *Associated Builders and Contractors* and the *Associated General Contractors* instructs *Contractor Superintendents, Quality Control (QC) staff, and foremen* in construction quality control and how it relates to Owner quality assurance (QA). The course describes the QC/QA system successfully used by the Corps of Engineers and NAVFAC. Contact your closest USACE District office for information on course schedules.



BUILDING STRONG®

U.S. Laws & Regulations

- Federal Acquisition Regulation (FAR)
- Defense FAR Supplement (DFARS)
- Army FAR Supplement (AFARS)
- Engineer FAR Supplement (EFARS)



BUILDING STRONG®

Base Operation Support Services Contract



CONTRACT/PROJECT:	Base Operating Support for Aegis Ashore Romania	
DESCRIPTION:	<p>Furnish all labor, supervision, management, tools, materials, equipment, facilities, transportation, incidental engineering, and any other items necessary to provide the services below to the Navy Aegis Ashore Facility at Deveselu, Romania.</p> <ul style="list-style-type: none"> • Fire and Emergency Services • Material Management/Supply Services • Galley Management • Bachelor Quarters • Facilities Management • Custodial, Pest Control • Integrated Solid Waste Management (ISWM) • Grounds Maintenance and Landscaping • Electrical, Wastewater, Water Systems Management • Base Support Vehicles and Equipment (BSVE) • Environmental Services 	
DESIGN LEVEL:	Performance-Based Performance Work Statement (PWS)	
ACQUISITION METHOD:	Best Value Source Selection (Negotiated Procurement)	
BUDGET RANGE:	\$25M to \$50M	
KEY TARGET DATES:	Issue RFP: 3rd Qtr FY14 Performance Start: 2nd or 3rd Qtr FY15	Award: 1st or 2nd Qtr FY15 *** All dates Tentative ***
KEY ASPECTS:	<ul style="list-style-type: none"> • Combination FFP/IDIQ (60 Month Maximum Term) <ul style="list-style-type: none"> – Base Year – 4 Option Periods (up to 12 months each) 	
QUESTIONS:	KEITH TURNER, NAVFAC EURAFSWA, Keith.Turner@eu.navy.mil	

Closing Remarks