

Product specifications

Comparison: WePad vs. iPad

	WePad	iPad
Display	11,6" mit 1366 x 768 Pixels, Colour, Multi-Touch	9,7" mit 1024 x 768 Pixels, Colour, Multi-Touch
Processor	1,66 GHz Intel Atom N450 Pineview-M	1,0 GHz Apple A4
Memory	16 / 32 GB, Extension with SDHC Card up to 32 GB possible	16 / 32 / 64 GB
Webcam	yes (1,3 Megapixel)	no
Peripherals	2 x USB integrated, Card reader, Audio output, SIM Card Slot, Multi-Pin Connector	Adapter for Camera and Card reader, micro SIM Card Slot
Java / Flash / Adobe AIR	yes / yes / yes	no / no / no
Applications	WePad Meta-Store integrates multiple Stores, Support for native, Java, Linux, Adobe AIR® and Android Apps	iTunes AppStore, Support for native Apps (Objective-C)
Multitasking	Yes including Live-Information on Home Screen	Limited
Battery life	ca. 6 h	ca. 10 h
Supported eBook Formats	ePub, PDF, TXT, Mobipocket, WeBook premium format at Q4/10	ePub, iBooks Store, Launch in Germany unknown

Ein Joint Venture von

neofonie*

4 tiitoo

Product specifications continuation

Connections	Bluetooth 2.1 + EDR, Wi-Fi (802.11 a/b/g/n), optional 3G (UMTS/HSDPA)	Bluetooth 2.1 + EDR, Wi-Fi (802.11 a/b/g/n), optional 3G (UMTS/HSDPA)
GPS	yes (Model WePad 3G)	yes (Model Wi-Fi + 3G)
Case	Magnesium-Aluminium	Aluminium
Dimensions	288 x 190 x 13 mm	242,8 x 189,7 x 13,4 mm
Weight	800 g, 850 g (Model 3G)	680 g, 730 g (Modell Wi-Fi + 3G)
Further details	Ambient Light Sensor, Acceleration Sensor, Stereo, Internal Microfon	Similar
Accessoires	Dock, Case and Sleeve, Wireless Keyboard, broad support for standard PC peripherals	Keyboard Dock, Dock, Case, Wireless Keyboard, Camera Connection Kit

Price

	Model	Price*
WePad	16GB+, WLAN	449.- €
WePad 3G	32GB+, WLAN, 3G, GPS	569.- €

*Subsidy by Media and Telecommunication Partners planned

+ Extension possible with SDHC Cards up to 32 GB

Availability in Germany

Pre-Ordering	27. April 2010
Roadshow	Mai 2010
Soft-Launch	July 2010
Mass Availability	August 2010

WePad OS, Apps and Cloud

The WePad is a tablet that provides its users, partners and developers with an open platform – for that ‘we feeling’.

The WePad is operated via a multi-touch display, and a variety of applications giving the user access to a wide variety of content and functions. The WePad is built on the WePad OS Linux-based operating system, which provides support for Android and Adobe AIR applications, amongst others.

Numerous applications may be downloaded and installed from the WePad Store (designed as a meta store) or from integrated open stores.

In addition, fully automated system component updates running in the background provide the user with optimal availability and security.

WePad OS

WePad OS is based on open source technologies. A current Linux distribution with its own touch-based user interface provides the basis for WePad OS. All applications are installed automatically and either run natively on the system or on a special layer.

Experienced developers can fully exploit the capabilities offered by the OS on their WePads and extend these as required. The WePad, however, is a device – similar to the iPhone and iPad – that can be operated intuitively by all users without any previous knowledge.

WePad Apps

Some of the applications offered in the WePad Store are: Web browser (support for Flash), media player (including music playback directly from the smart card), Web radio, photo album, file management, email program, e-Reader (all open and available formats including ePub and PDF), instant messaging program, VOIP and video telephony program, calendar, address book, task list and a large collection of games.

Various newspapers and magazines from numerous publishing houses are also available for download from the WePad Kiosk for a small fee. The WeMagazine Reader allows the relaxed and fluent reading of content and includes interactive content as well as the integrated WeFind search engine.

Technologies underlying the applications range from standard Web technologies to native Linux, Java and Adobe AIR applications as well as complete web-based services.

The integration of applications from open stores such as Android or Adobe AIR Marketplace is supported. This is to prevent the further formation of ‘application islands’. The user is therefore free to choose which applications they wish to install from the various stores via a front-end that is, as far as possible, standardised.

WePad OS, Apps and Cloud continuation

WePad Cloud

By user request, all the user's content is synchronised with the complementary online storage area on the WePad cloud servers. This also allows the user to access their data via other devices.

version 1.4, April 12th, 2010

CONTACT

 Helmut Hoffer von
Ankershoffen

 wepad@neofonie.de

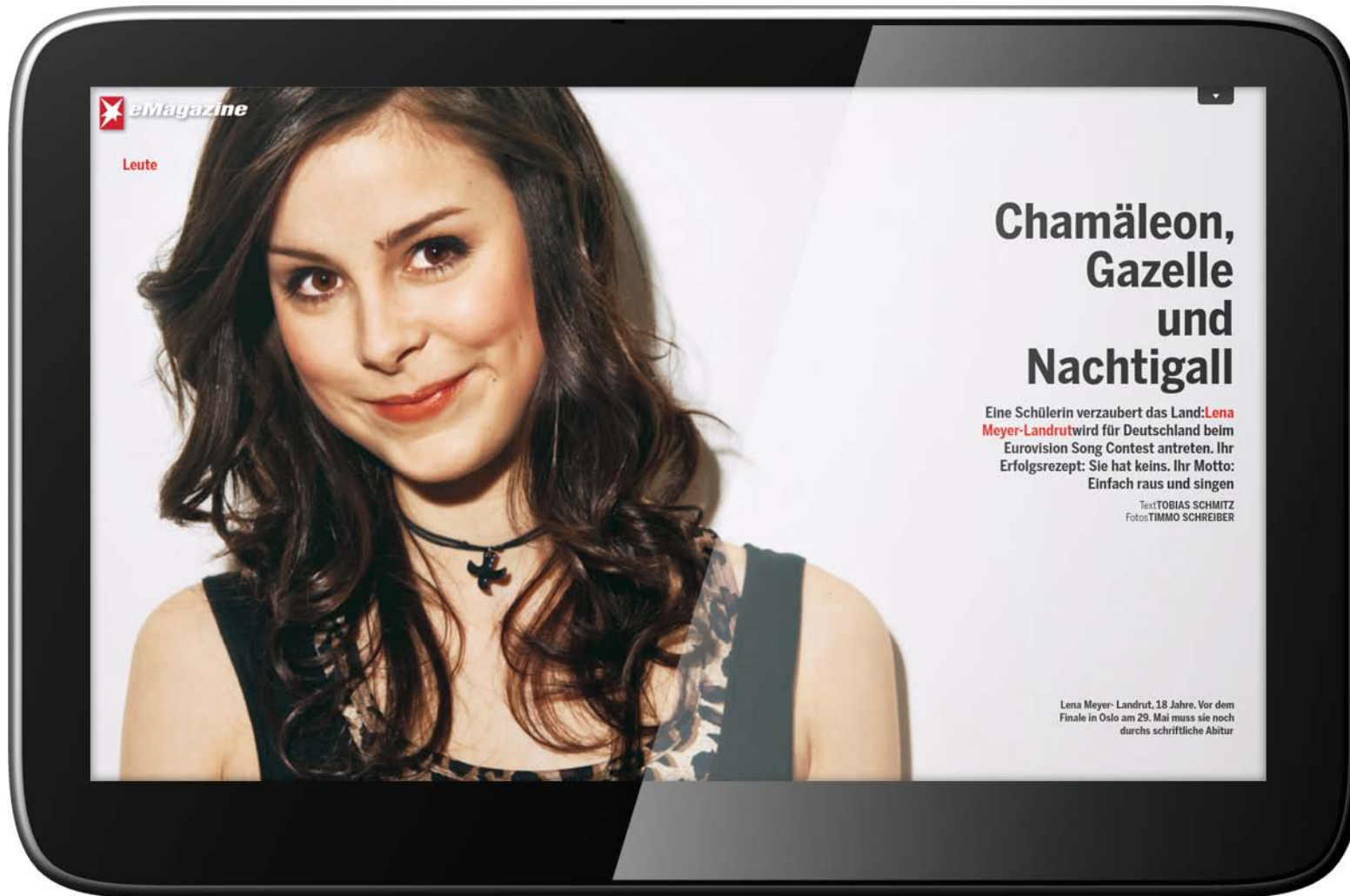
 +49 30 24627-504

 www.wepad.mobi

WePad GmbH i.G.



WePad desktop screen



German's stern eMagazine powered by WeMagazine on the WePad



WePad frontal view, slightly tilted



WePad view slightly tilted to the left



WePad view, slightly tilted to the right



WePad side view



WePad view, slightly tilted to the front



WePad view from behind



WePad side view, frontal view and view from behind



WePad desktop background